

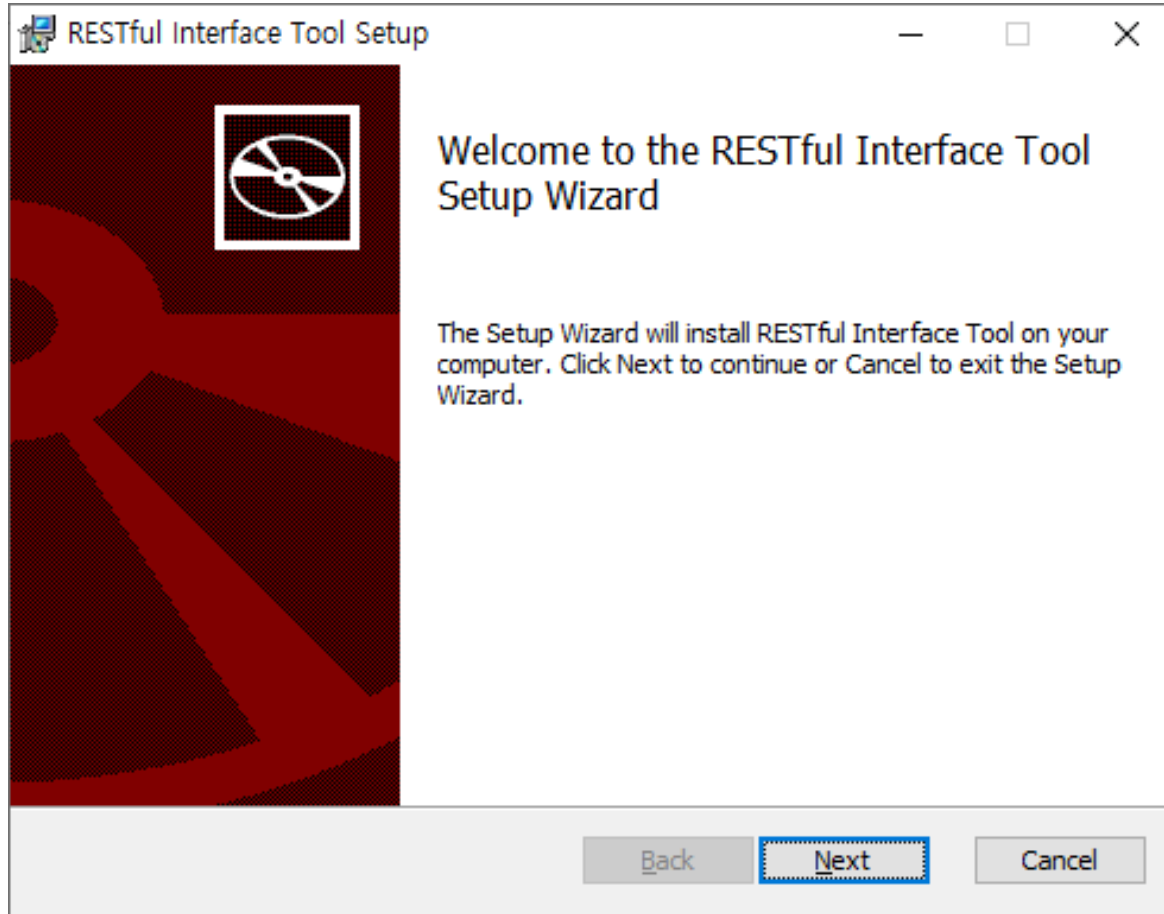
# HPE 윈도우 서버 끄지 않고 로그 수집

클릭해서 확인

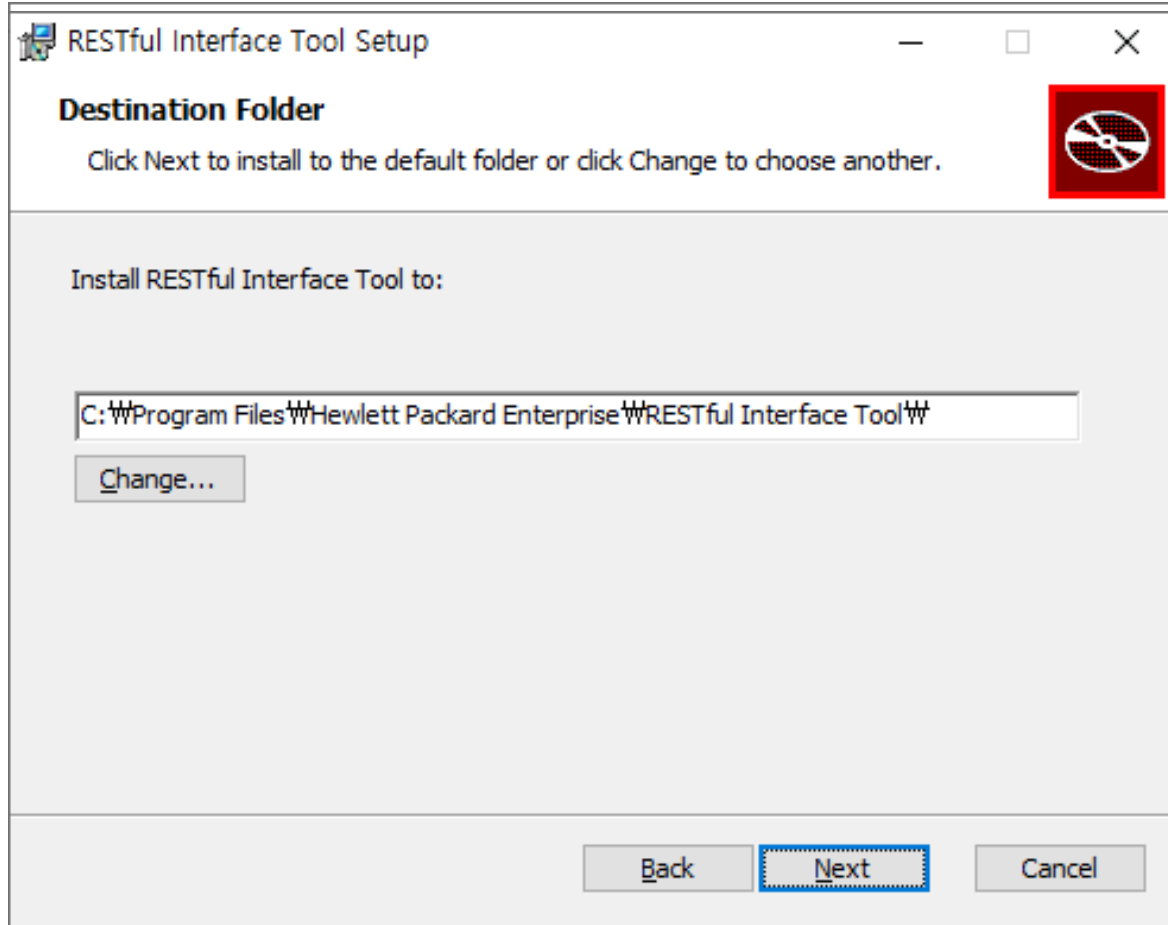
(주)신성씨앤에스 |

견적문의 02-867-3007 |

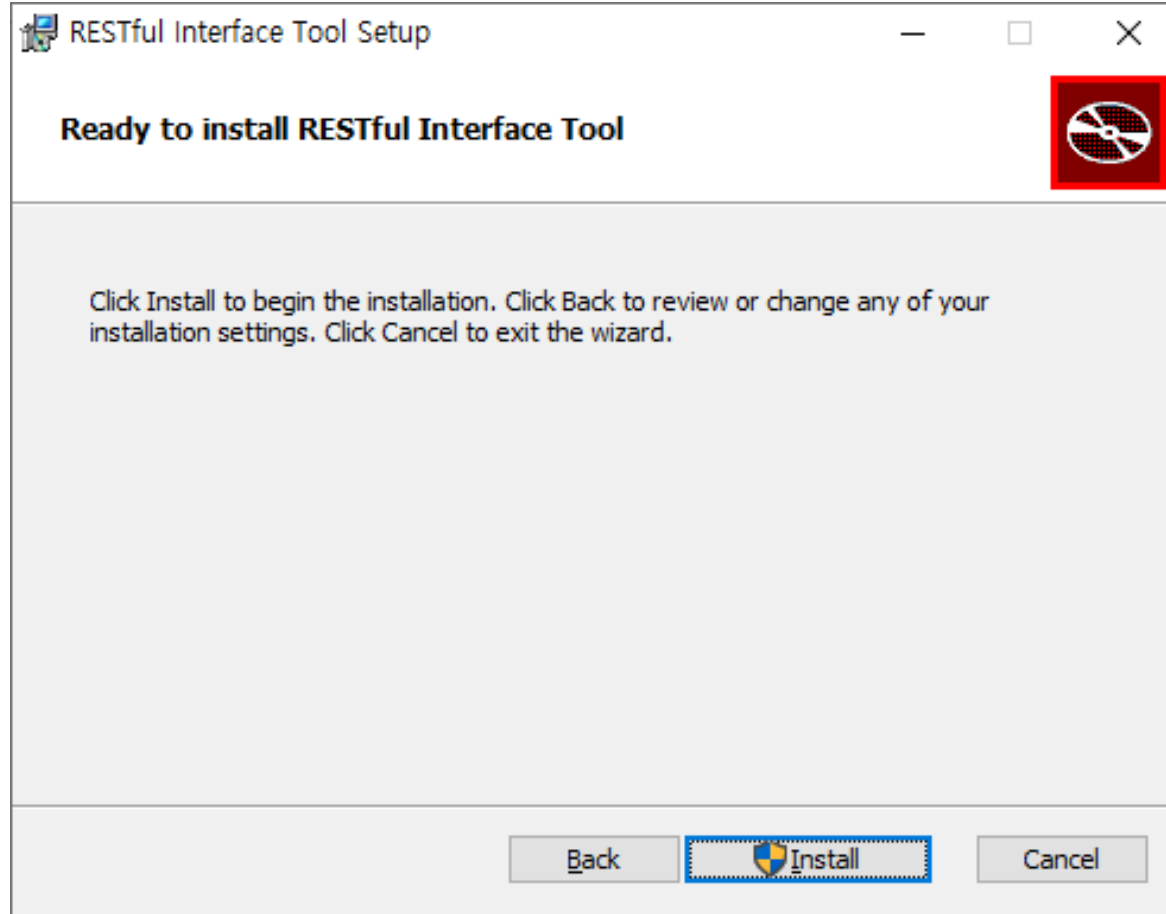
기술문의 02-867-2640 |



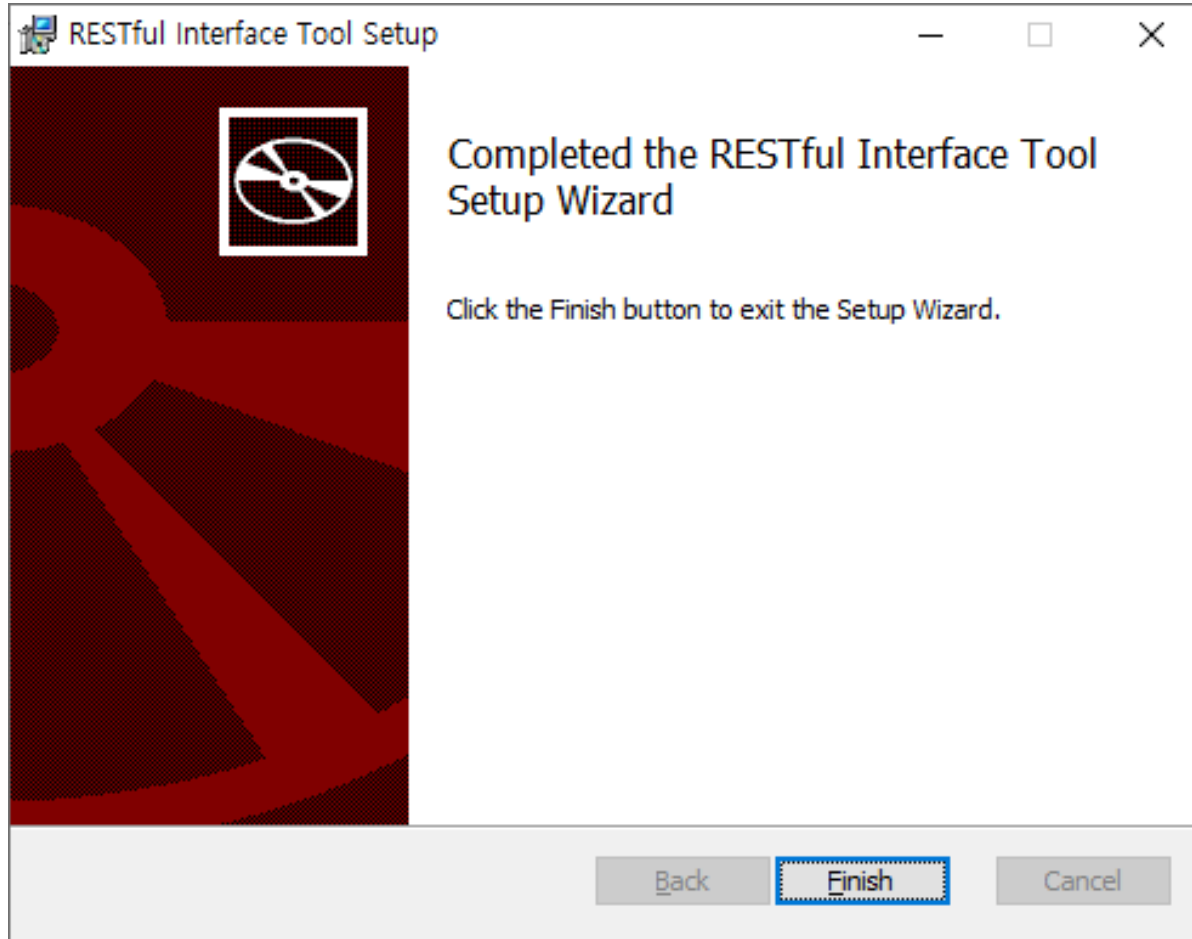
- 1 링크([https://1drv.ms/u/s!Au2\\_efy9NKzChfsZAbe7Jpo930MDGw?e=O3IxEc](https://1drv.ms/u/s!Au2_efy9NKzChfsZAbe7Jpo930MDGw?e=O3IxEc)) 클릭 후 파일 설치 → Next



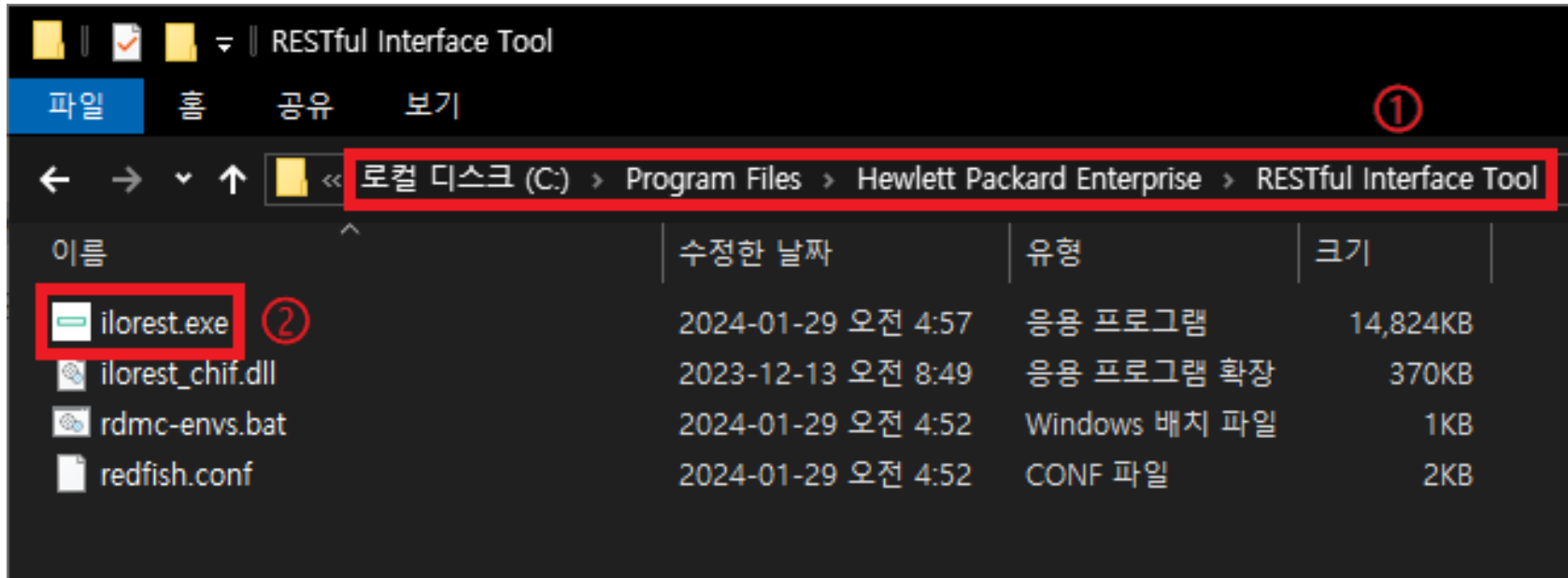
## 2 Next 클릭



### 3 Install



## 4 Finish



- 5 W:C:\Program Files\Hewlett Packard Enterprise\RESTful Interface Tool 진입  
→ ilorest.exe 우클릭 → 관리자 권한으로 실행

```
C:\Program Files\Hewlett Packard Enterprise\RESTful Interface Tool\
iLOrest : RESTful Interface Tool version 3.1.1
Copyright (c) 2014-2020 Hewlett Packard Enterprise
-----
iLOrest > serverlogs --selectlog=AHS
Discovering data... Done
Mounting AHS partition...
iLOrest > _
```

6 serverlogs --selectlog=AHS -> 1주일 로그 수집

serverlogs --selectlog=AHS -customiseAHS "from=xxxx-xx-xx&&to=xxxx-xx-xx"

→ from 날짜부터 to 날짜까지 로그 수집

예시: serverlogs --selectlog=AHS -customiseAHS "from=2024-02-01&&to=2024-02-28"

→ 2024년 2월 1일부터 2024년 2월 28일까지 로그 수집

```
C:\Program Files\Hewlett Packard Enterprise\RESTful Interface Tool#\iLorest : RESTful Interface Tool version 3.1.1  
Copyright (c) 2014-2020 Hewlett Packard Enterprise  
-----  
iLorest > serverlogs --selectlog=AHS  
Discovering data... Done  
Mounting AHS partition...  
iLorest > _
```

- 7 로그는 아래 경로에 .ahs 파일로 저장됩니다.

C:\Program Files\Hewlett Packard Enterprise\RESTful Interface Tool